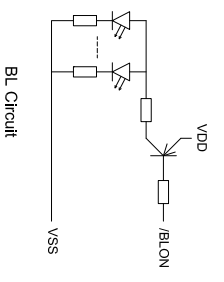
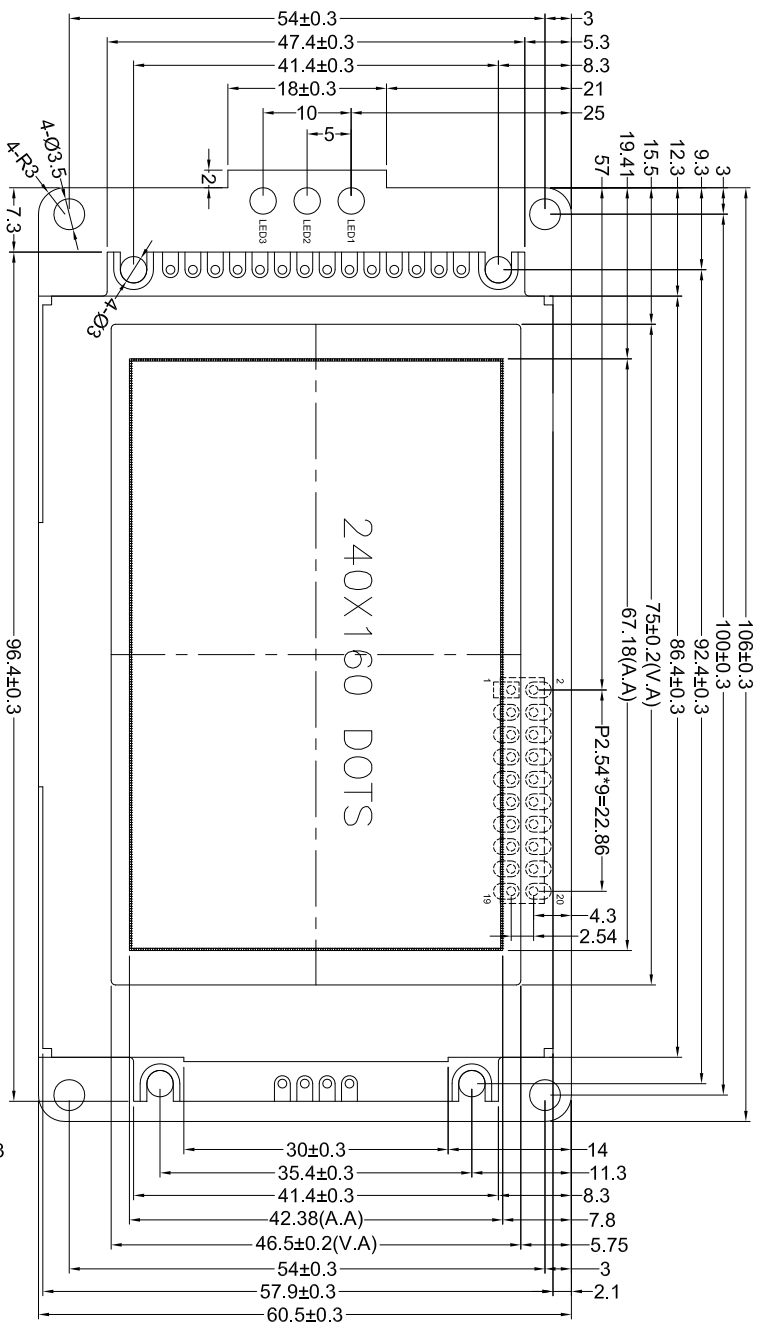
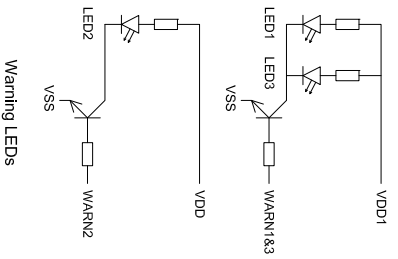
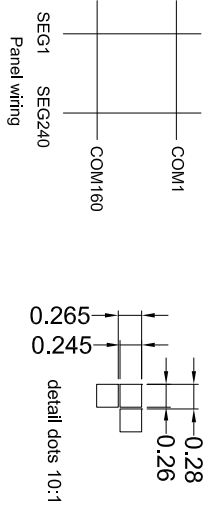
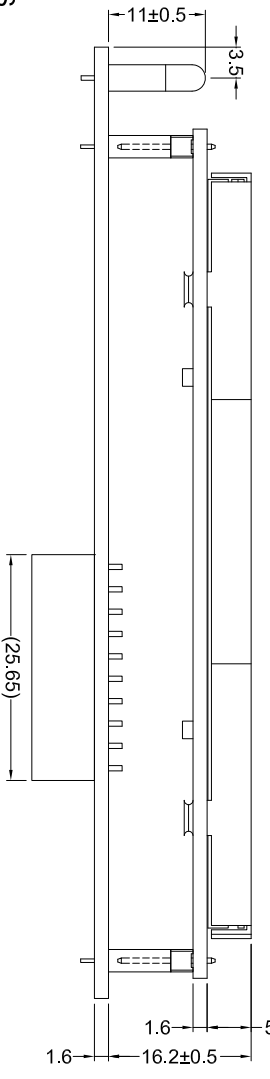


No	Symbol	Pin assignment
1	VSS	
2	/CS	
3	/RES	
4	A0	
5	/MR	
6	/RD	
7	D0	
8	D1	
9	D2	
10	D3	
11	D4	
12	D5	
13	D6	
14	D7	
15	VDD	
16	VSS	
17	WARN1&3	
18	WARN2	
19	VDD1	
20	/BLON	



NOTES:

1. Display type:STN/Blue
2. Viewing direction:9 O'CLOCK
3. Drive method:1/160DUTY 1/12BIAS
4. Polarizer mode:Transmissive/Negative
5. Operation temperature:-20°C~+70°C
6. Storage temperature:-30°C~+80°C
7. Driver/Controller IC:RA8835 or equivalent
8. Operating Voltage:5V
9. Backlight: LED White, V_{LED_A}=5V, I_F=135mA
10. LED1~LED3:Ø3mm clear case red LEDs
11. The dimension with "()" is reference
12. Tolerance is ±0.3 unless otherwise noted



REVISION RECORD		DATE	SHENZHEN ET TECHNOLOGY CO.,LTD.
A	First Issue		Http://www.et-tech.com
B			Email: eass@et-tech.com
C			Model No.: ET-G240160EV2
D			Part No.: SPEC-ET-G240160EV2
E			Model No.: ET-G240160EV2
F			Model No.: ET-G240160EV2