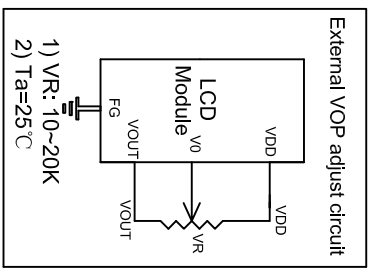
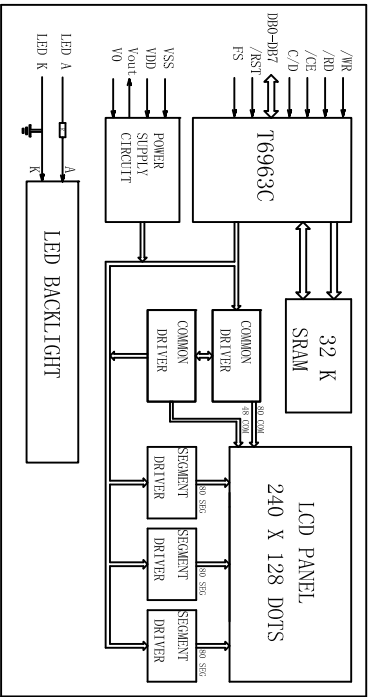


Pin.No	Symbol	Description
1	FG	Frame Ground.
2	VSS	GND.
3	VDD	Power supply for Logic and LCD.
4	V0	Operating voltage for LCD.
5	/MR	Command and data write signal.
6	/RD	Data and status read signal.
7	/CE	Chip enable signal.
8	C/D	Command / Data selection.
9	/RST	Reset signal (Low effective).
10-17	DB0-DB7	Data bus.
18	FS	Selection of font. Hr: 6 X 8 L: 8 X 8.
19	LED A	Backlight anode (+5V).
20	Vout	Negative voltage output to LCD

ABSOLUTE MAXIMUM RATING			
Item	Symbol	Min	Max
Supply voltage	Logic VDD	4.8	5.0
LCD Operating Voltage	VDD-V0	-	14.5
LED Voltage	V Led	4.8	5.0
LED Current (Side LED)	I Led	-	190
			200

Description	
1.	DISPLAY TYPE: SW / Negative Blue; (SW / Positive, Yellow-Green).
2.	Viewing Direction of CLOCK: (12 o'clock).
3.	Polarizer Mode: Transmissive; (Transflective ; Reflective).
4.	Color of Backlight: White; (Yellow/Green).
5.	Operating voltage option: 5V.
6.	Operating Temp: -20° ~ 70° C.
7.	Storage Temp: -30° ~ 80° C.



REVISION RECORD		SHENZHEN ET TECHNOLOGY CO.,LTD.	
DATE	DESCRIPTION	DATE	DESCRIPTION
1			
2			
3			
4			
5			
6			

1	HTTTP://www.easiet.com	GEN.TOL.: ±0.2
2	Model No.: ET-G240128AV2	PRO.(3):
3	Part No.: SPEC-ET-G240128AV2	VER.: A
4	DRAWN OY	DATE 2011.06.09
5	CHECKED	DATE
6	APPROVED	DATE