

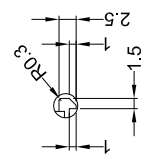
DOTS:192*64

背面视图

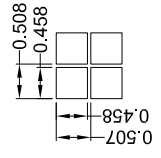
NOTES:

1. Display type: FSTN
2. Viewing direction: 12 O'CLOCK
3. Drive method: 1/65DUTY 1/9BIAS VOP=9V
4. Polarizer mode: Transmissive/positive
5. Operation temperature: -20°C~+70°C
6. Storage temperature: -30°C~+80°C
7. Driver/Controller IC: IST3020
8. Operating Voltage: 3.3V
9. Backlight: LED White, V_{BAL}=3.1V, I_f=60mA (MAX)
10. The dimension with "()" is reference
11. Tolerance is ±0.3 unless otherwise noted

No	Symbol	No	Symbol
1	HPMB	16	PS
2	C86	17	D7
3	V4	18	D6
4	V3	19	D5
5	V2	20	D4
6	V1	21	D3
7	V0	22	D2
8	C2-	23	D1
9	C2+	24	D0
10	C1+	25	RDB
11	C1-	26	WRB
12	C3+	27	A0
13	VFP	28	RESB
14	VOUT	29	CS1B
15	VDD2	30	VSS



detail "A" 1:1



detail dot 10:1

REVISION RECORD	DATE	SHENZHEN ET TECHNOLOGY CO.,LTD. E-mail: east@eastel.com
A	First Issue	GEN.TOL.: ±0.2
B		PRO.03: A
C		VER.: 1/1
D		DATE: 2012.05.29
E		SHEET: 1/1
F		UNIT: mm
		SCALE: 1:1