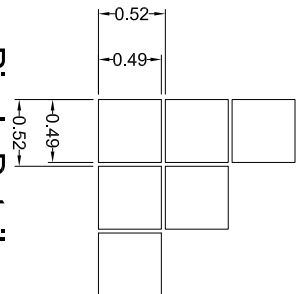
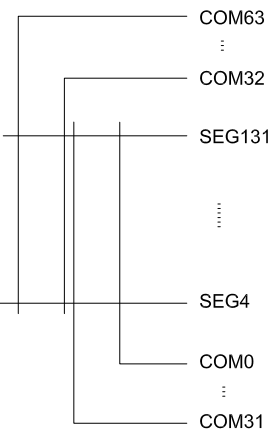
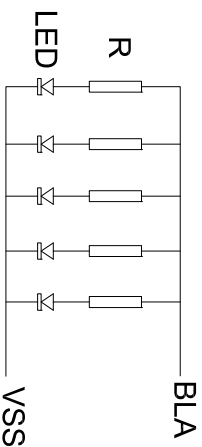


K1	Pin Name	K2 (SP1)	Pin Name
1	VSS	1	VSS
2	VDD	2	VDD
3	D7	3	D7
4	D6	4	D6
5	D5	5	A0
6	D4	6	/RES
7	D3	7	/CS1
8	D2	8	BLA
9	D1		
10	D0		
11	/RD		
12	/WR		
13	A0		
14	/RES		
15	/CS1		
16	BLA		



Pixels Details
Scale=20:1



Backlight Circuit Details

NOTES:

1. DISPLAY TYPE: STN
2. LCM OPERATING VOLTAGE: 3.3V
3. OPERATING TEMPERATURE: -20°C~70°C
4. STORAGE TEMPERATURE: -30°C~80°C
5. DRIVE MODE: 1/65D,1/9B
6. VIEWING DIRECTION: 6:00
7. POLARIZER TYPE: TRANSMISSIVE,NAGATIVE
8. CONNECTOR: FPC
9. DRIVER IC: ST75665R
10. BACK LIGHT: 100MA(3.3V,TYP.)

REVISION RECORD	DATE	SHENZHEN ET TECHNOLOGY CO.,LTD.
A First Issue		Model No.: ET-G12864-8-2
B Modify dimension		Part No.: ET-G12864-8-2
C		PRO.(3):
D		VER.: B
E		DATE 2011.11.17
F		DATE
		UNIT: mm
		SCALE: 1:1

A

A